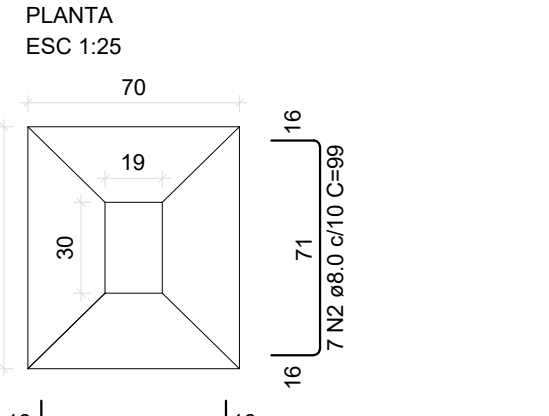
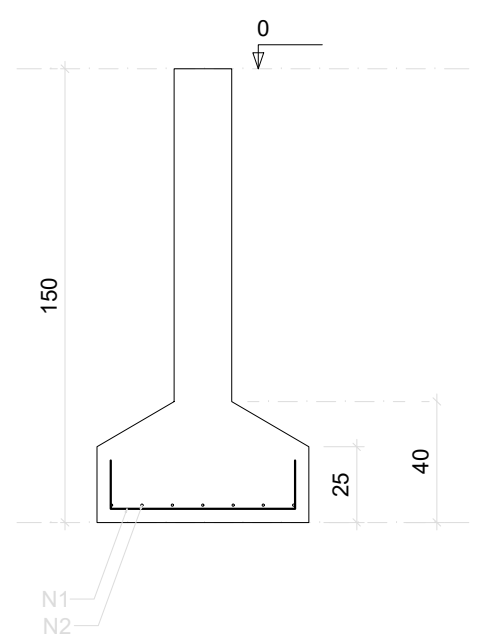


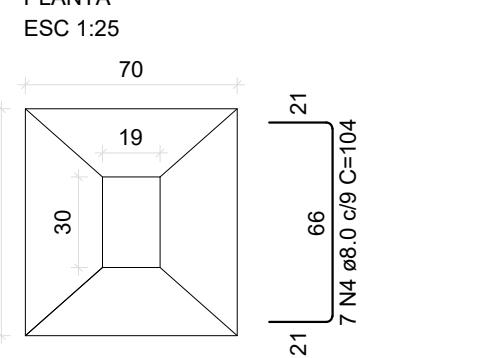
S1=S17-S18-S25-S31-S53-S54



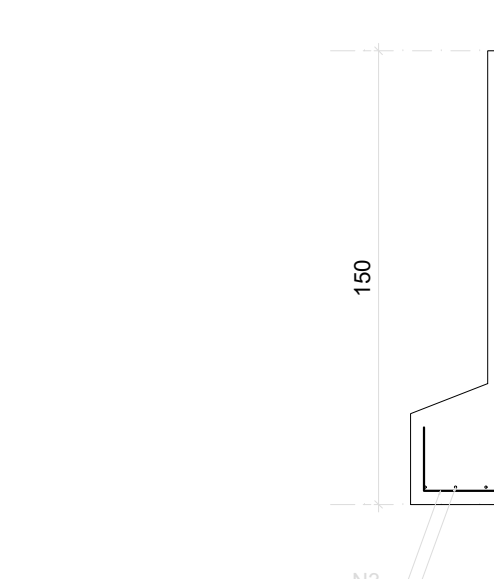
CORTE
ESC 1:25



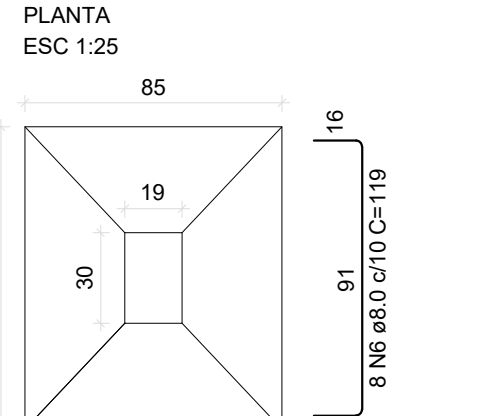
S2=S3-S4-S5-S20-S21-S22-S23-S32-S33-S55
=S56-S61



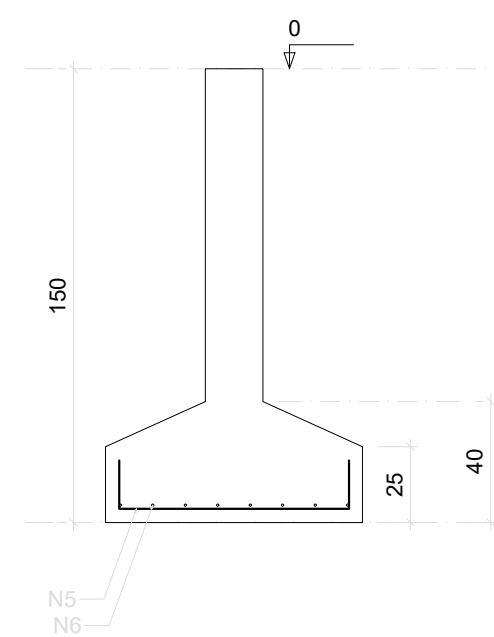
CORTE
ESC 1:25



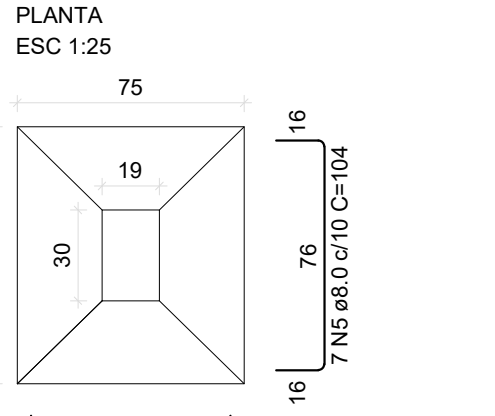
S6



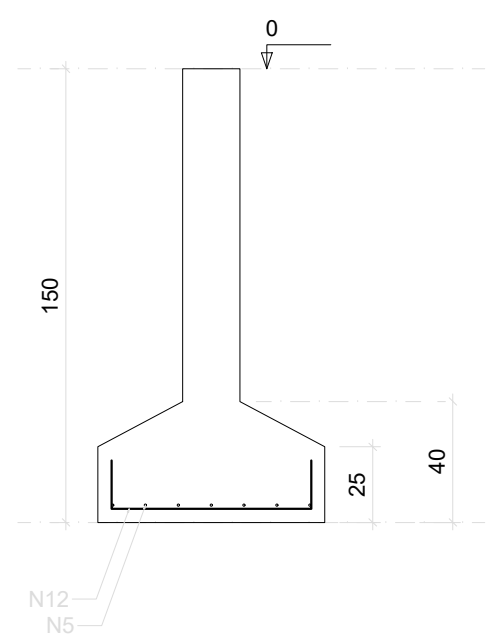
CORTE
ESC 1:25



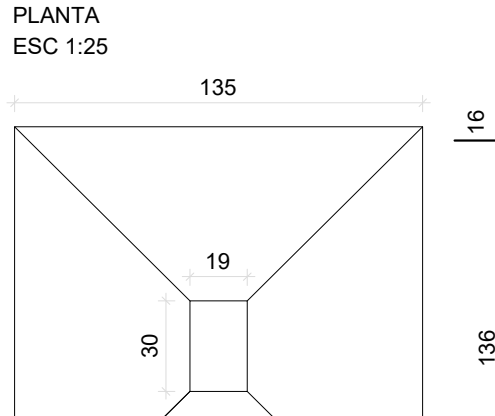
S7-S34



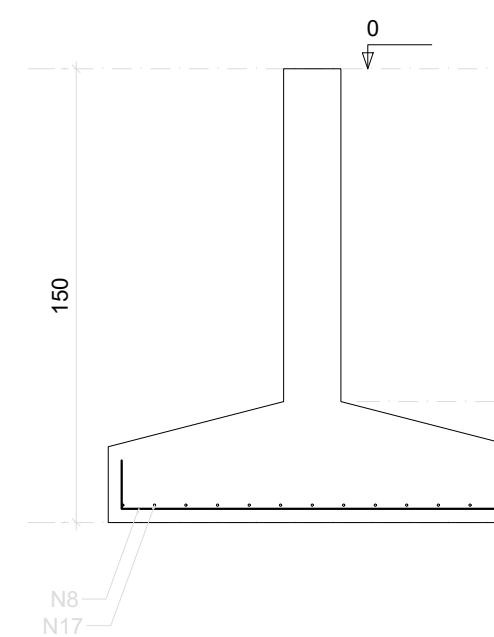
CORTE
ESC 1:25



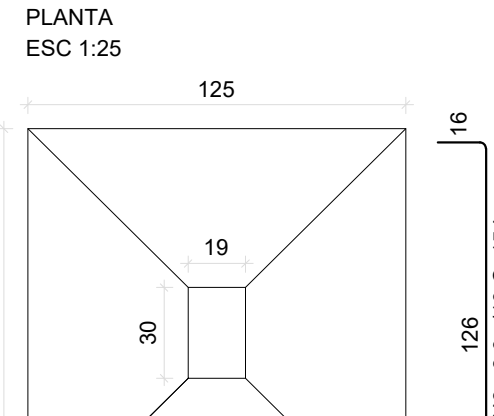
S8-S29-S41



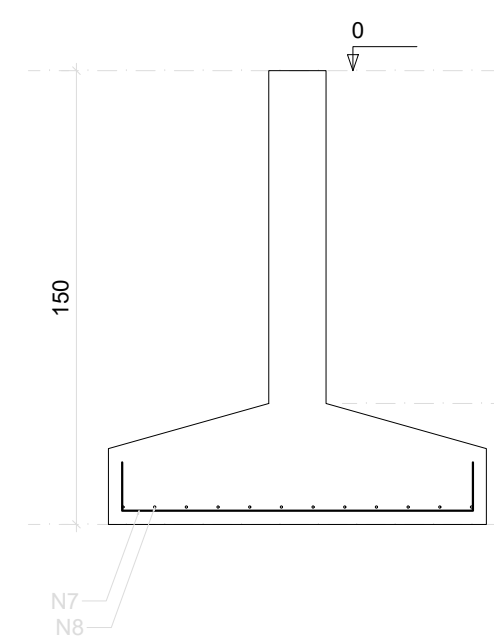
CORTE
ESC 1:25



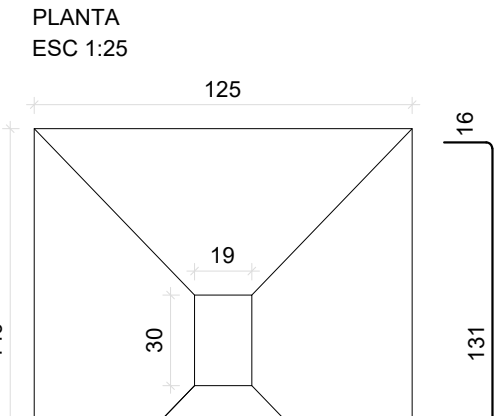
S9



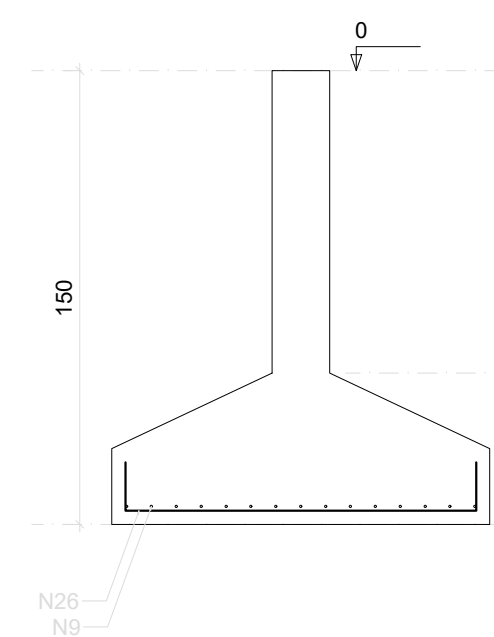
CORTE
ESC 1:25



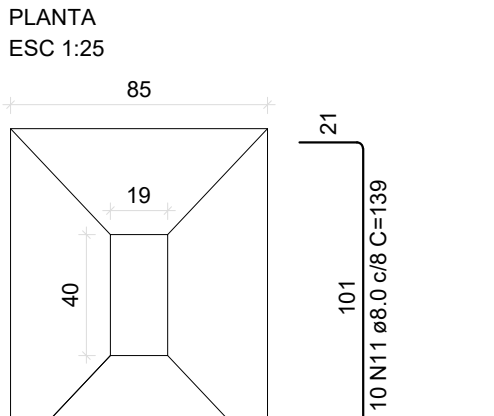
S10-S64



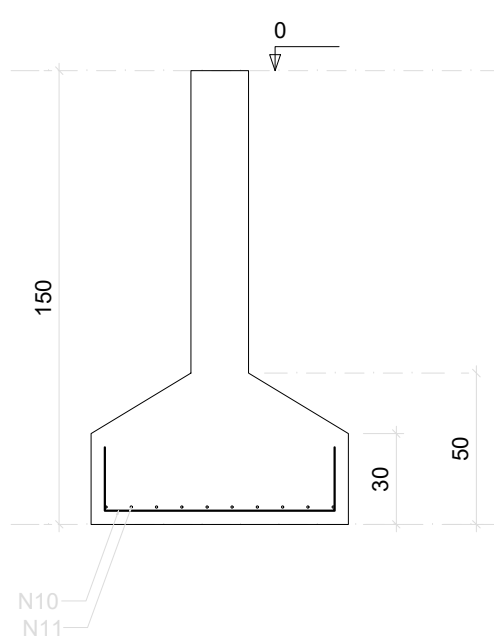
CORTE
ESC 1:25



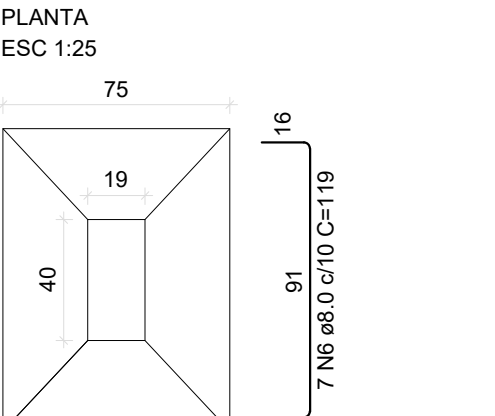
S11=S12-S44-S45



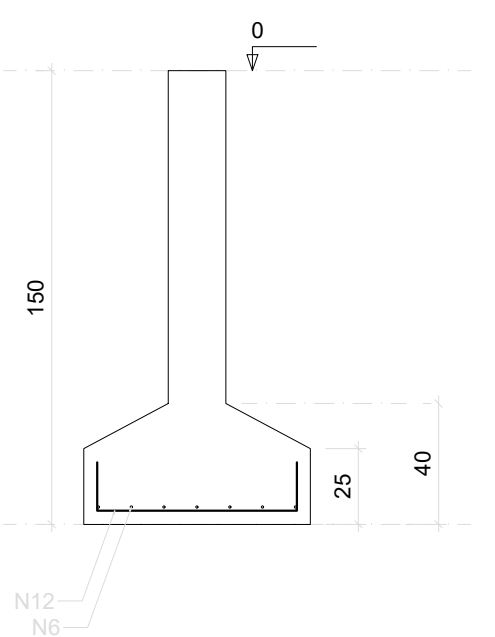
CORTE
ESC 1:25



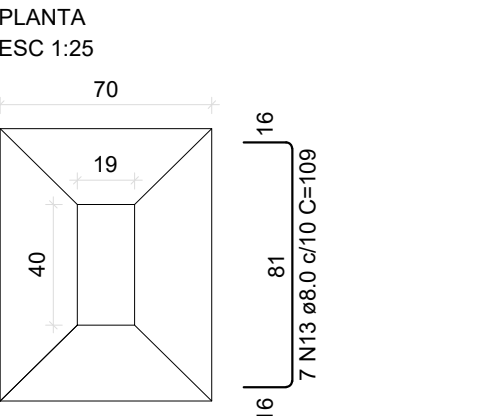
S13-S15



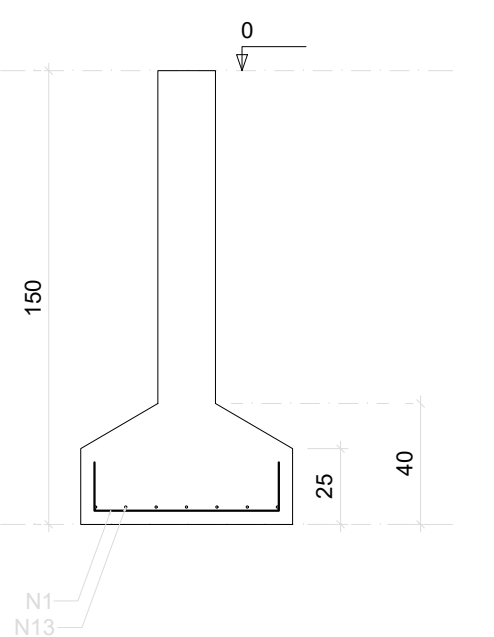
CORTE
ESC 1:25



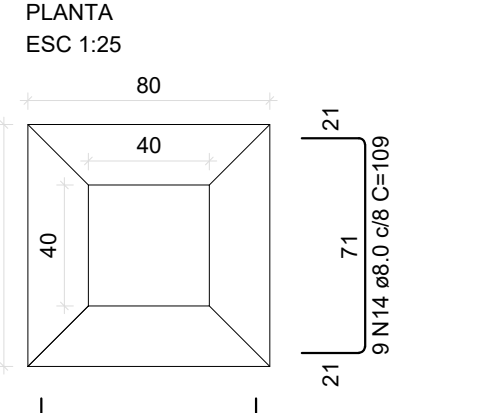
S14



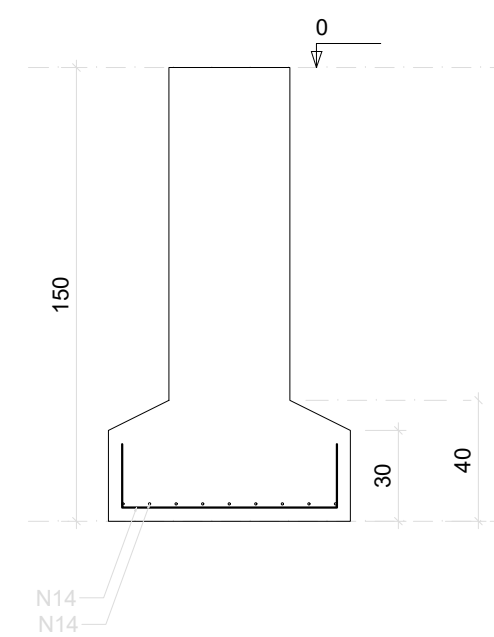
CORTE
ESC 1:25



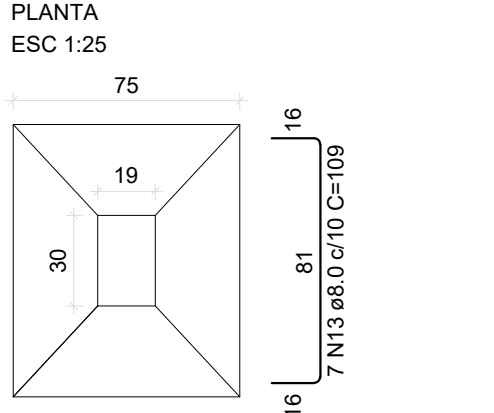
S16-S48



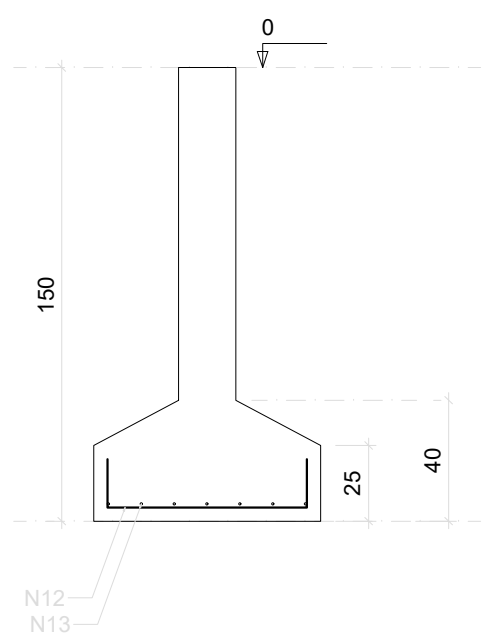
CORTE
ESC 1:25



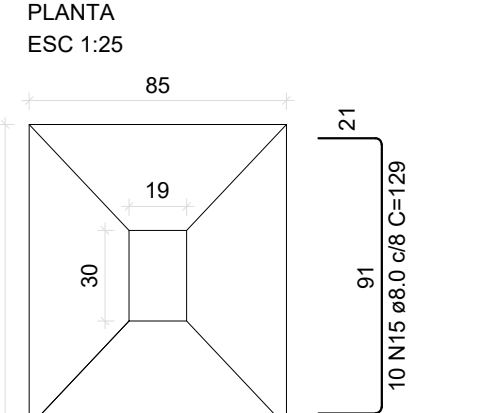
S19-S30



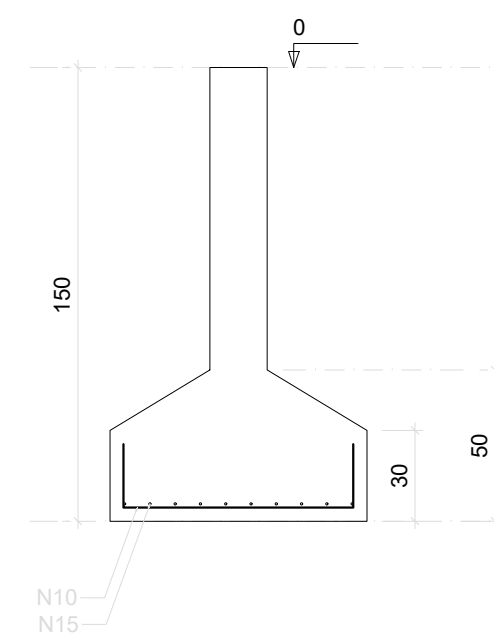
CORTE
ESC 1:25



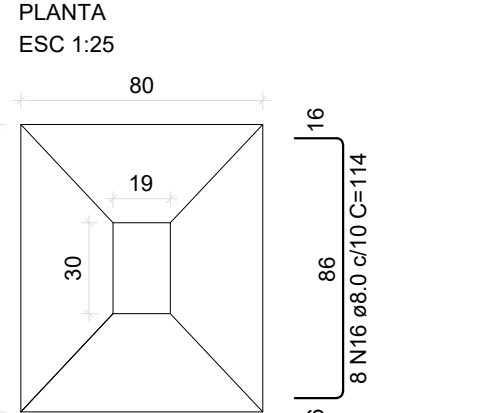
S24



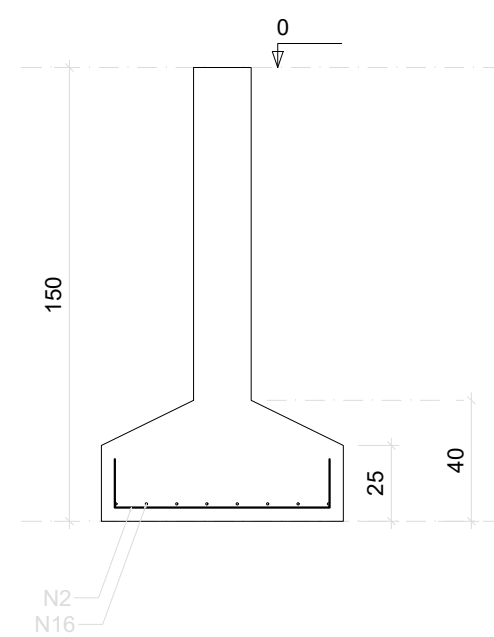
CORTE
ESC 1:25



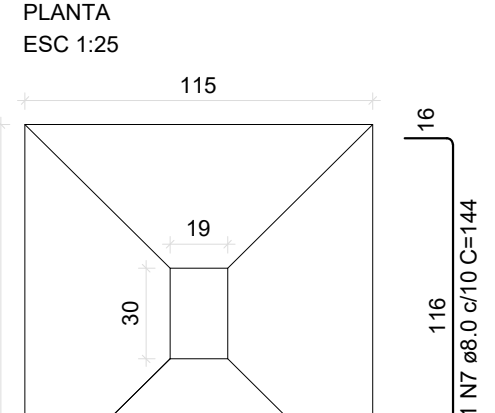
S26-S27-S39-S51



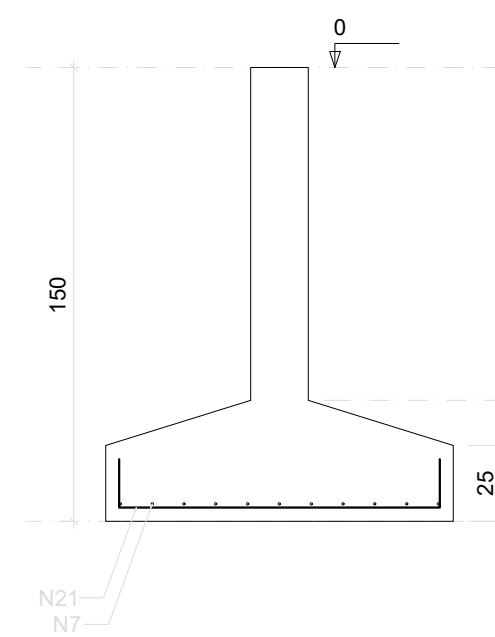
CORTE
ESC 1:25



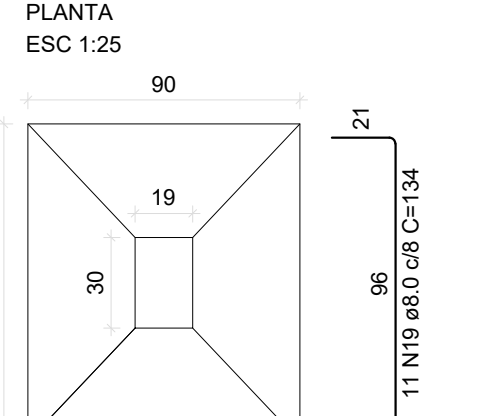
S28-S40-S62



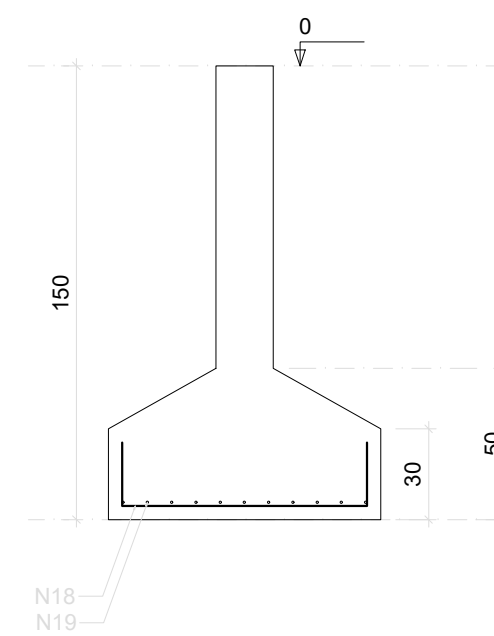
CORTE
ESC 1:25



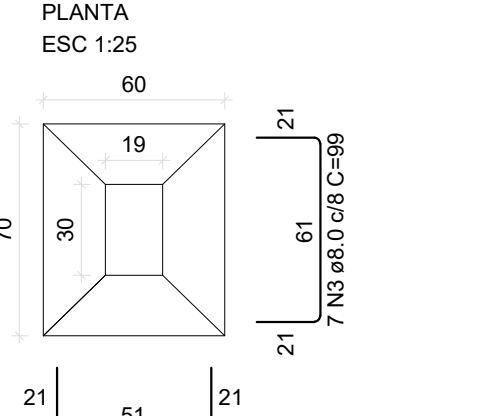
S35-S36-S59-S60



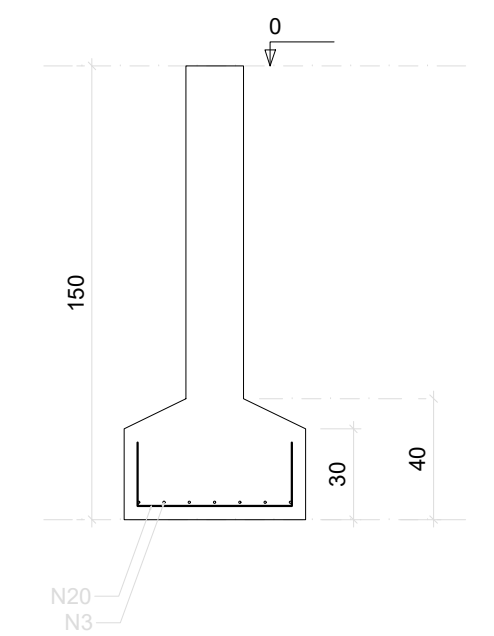
CORTE
ESC 1:25



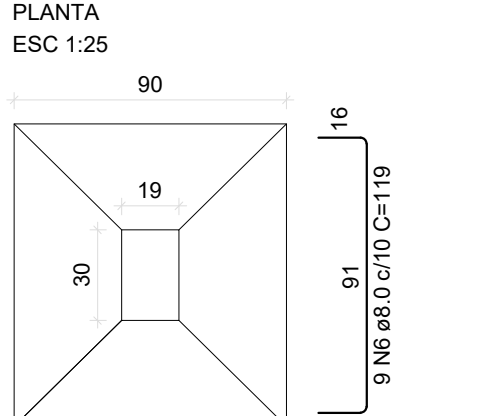
S37-S57-S58



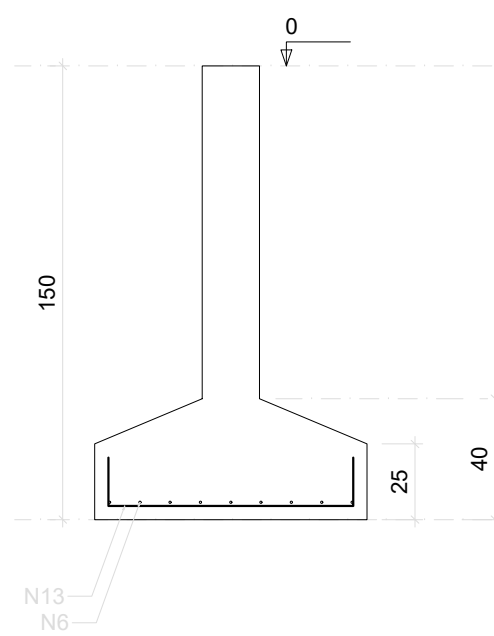
CORTE
ESC 1:25



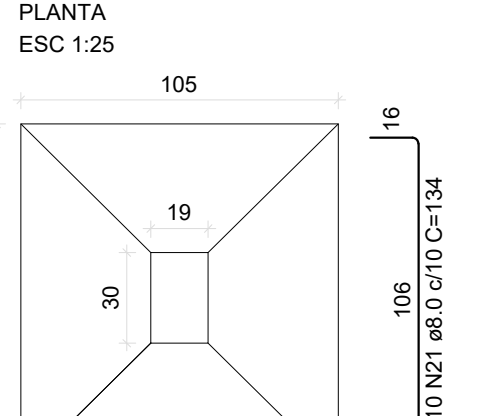
S38



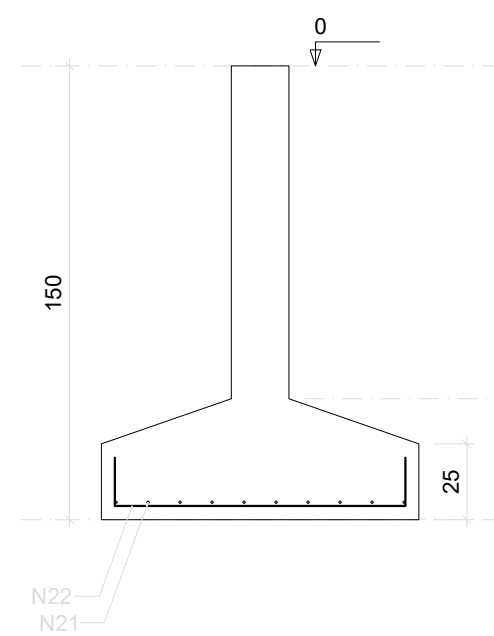
CORTE
ESC 1:25



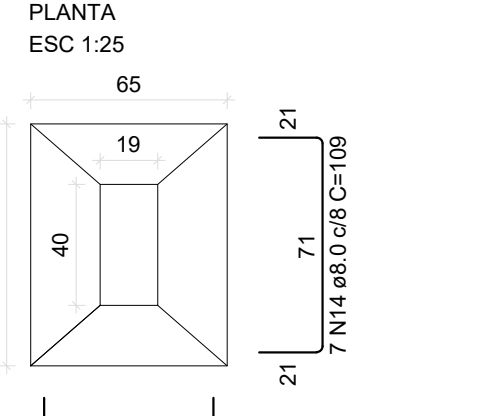
S42-S43-S49



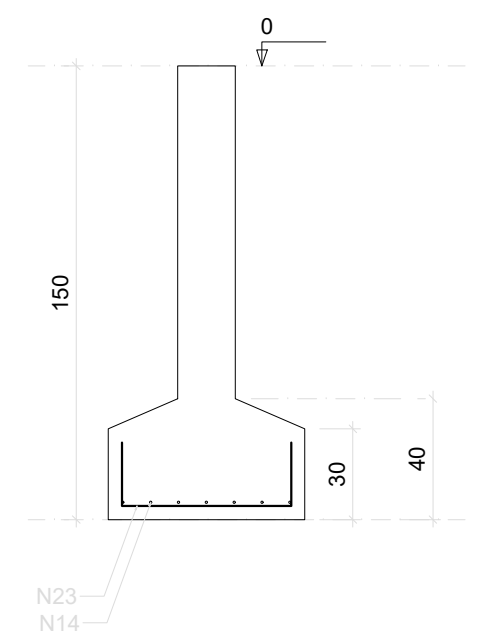
CORTE
ESC 1:25



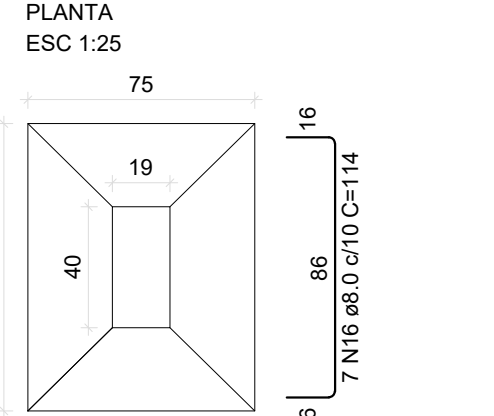
S46



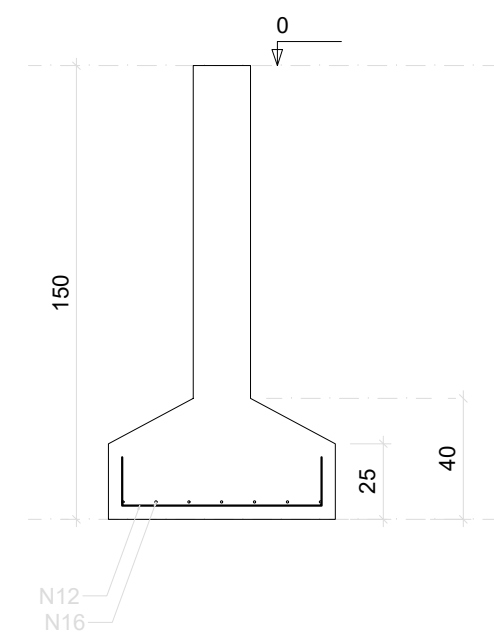
CORTE
ESC 1:25



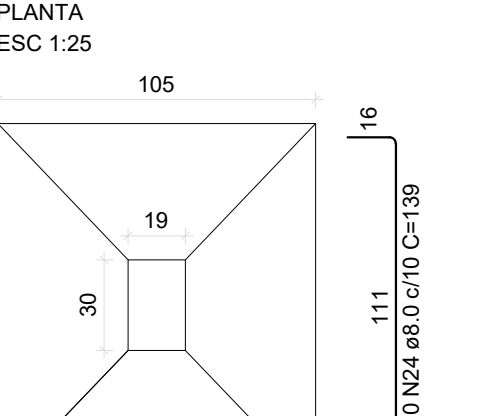
S47



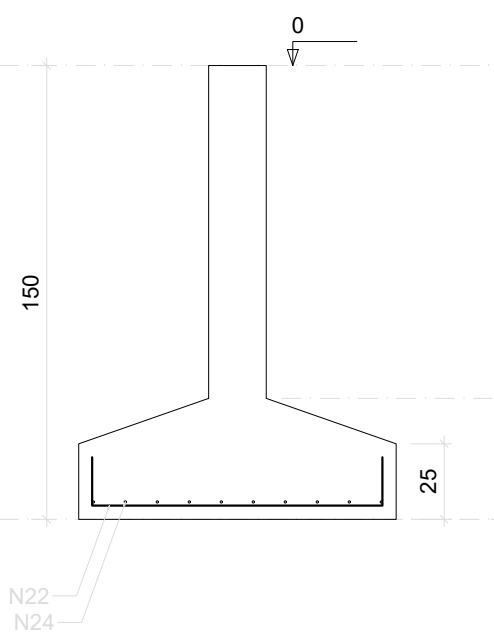
CORTE
ESC 1:25



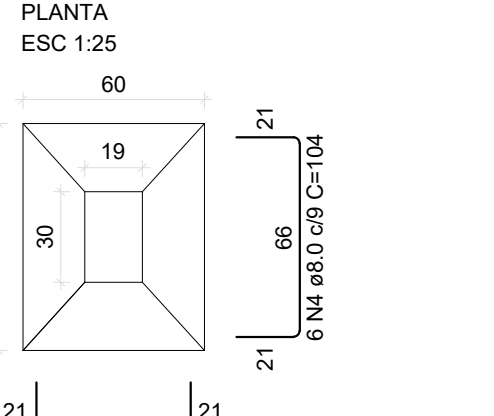
S50



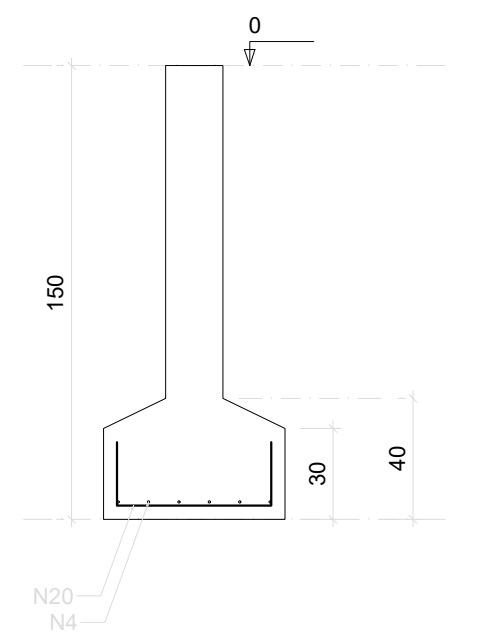
CORTE
ESC 1:25



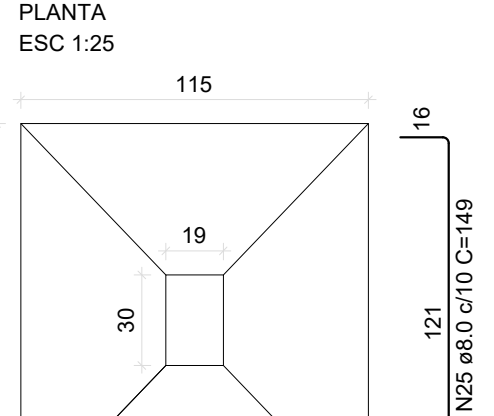
S52



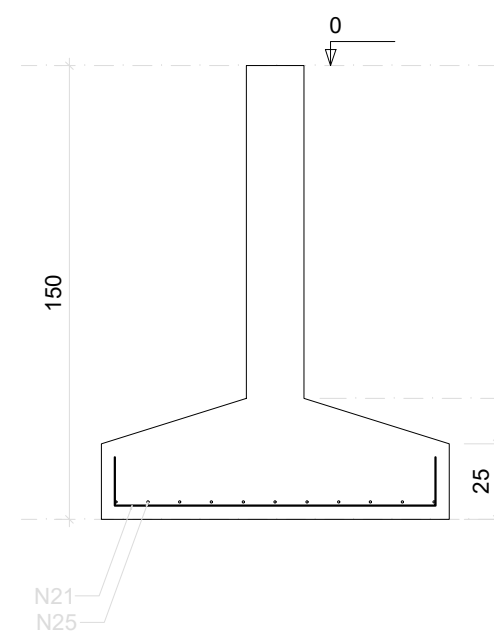
CORTE
ESC 1:25



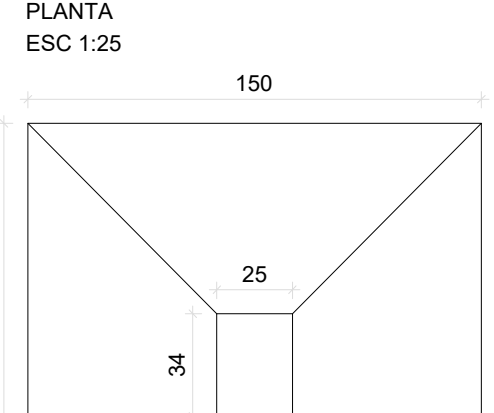
S63



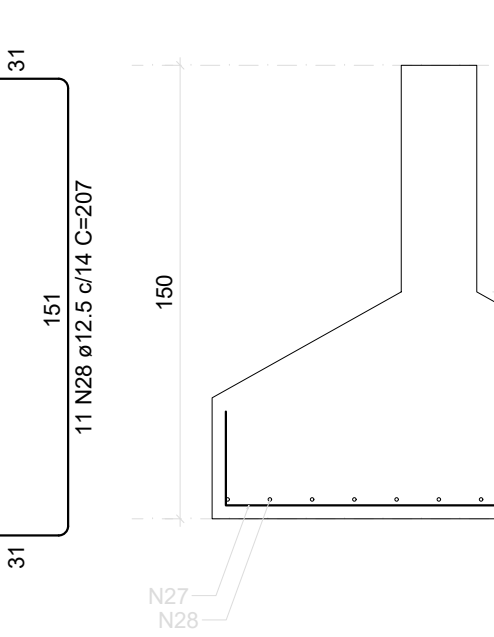
CORTE
ESC 1:25



S65-S66



CORTE
ESC 1:25



Solo com capacidade de suporte > 1.50 kgf/cm²
Solo compactado sobre a sapata
peso específico > 1600.00 kgf/m³

RELAÇÃO DO AÇO

7x51	13x52	56			
59	23x50	56	4x311	2618	
2x51	S14			S618	
2x519	S14			3415	
3x527	26x34			3x345	
3x527	S38			3x540	
3x527	S52			847	
3x565	S52			S613	
CAÇO	N	DIAM	QUANT	C.UNIT	C.TOTAL
1	8.0	65	89	5785	
2	8.0	80	89	8415	
3	8.0	125	89	12375	
4	8.0	97	104	10088	
5	8.0	24	104	2496	
6	8.0	31	119	3699	
7	8.0	46	144	6624	
8	8.0	54	154	8316	
9	8.0	50	159	4770	
10	8.0	64	114	7296	
11	8.0	40	139	5560	
12	8.0	66	94	6304	
13	8.0	31	109	3379	
14	8.0	43	109	4697	
15	8.0	10	129	1290	
16	8.0	39	164	4446	
17	8.0	39	164	6396	
18	8.0	48	119	5712	
19	8.0	44	134	5889	
20	8.0	33	89	2937	
21	8.0	79	134	10586	
22	8.0	49	134	5580	
23	8.0	45	134	5590	
24	8.0	10	139	1390	
25	8.0	10	139	1390	
26	8.0	10	122	1439	
27	12.5	22	197	4334	
28	12.5	22	207	4654	